



JLC Victoria

Information Session 2023

JLCビクトリア日本語幼稚園
JLC Victoria Japanese Preschool

1



Contents

- JLC Program
- Preschool Program Transition
- New Program
- Preschool Program Schedule
- Fee & Option
- Parent Handbook
- Q & A

2

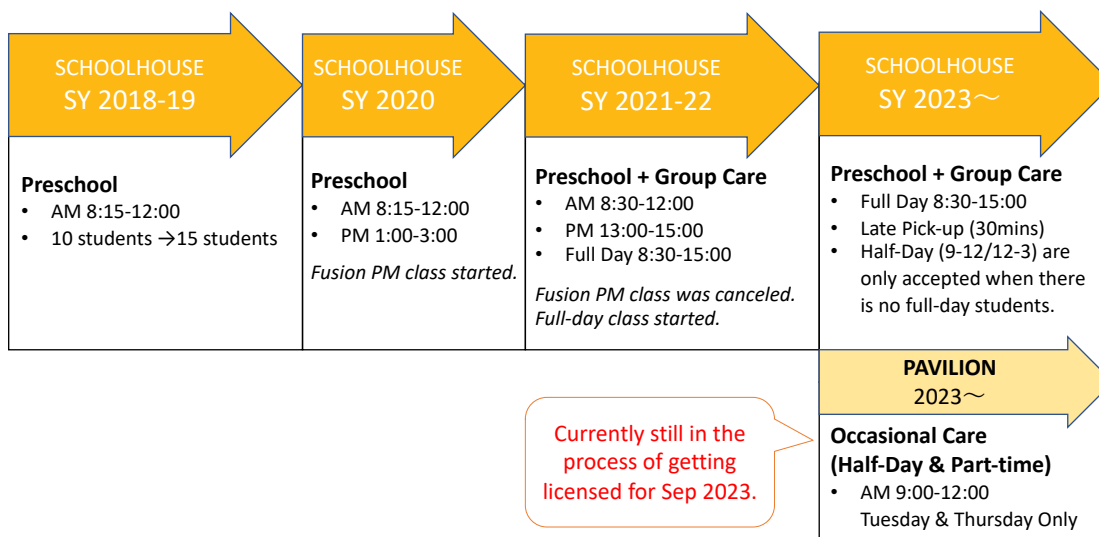
JLC Programs

Centered on preschool program, we support Japanese education from 0 to 12 years old.

1 st Stage	2 nd Stage	3 rd Stage
Infant/Toddler (0~2 yrs)	Preschool (3~5yrs)	School Age (Kinder~G5)
<ul style="list-style-type: none"> Japanese Fusion Play (50mins) Japanese Immersion Prep (50min) 	Licensed Preschool <ul style="list-style-type: none"> Full-Day Program Half-Day Program Spring/Summer Camp 	Licensed Group Child Care <ul style="list-style-type: none"> After-School Program Spring/Summer Camp

3

Preschool Program Transition



4

Programs & Locations



Program	Location	Registration	Dates	Daily Hours
Preschool	Schoolhouse	Annual	Monday to Friday	8:30-15:00
Summer Camp (Preschool)	Schoolhouse	Weekly	Monday to Friday	9:00-15:00
After School	Schoolhouse	Annual	Tue, Wed, Thu	15:30-17:30
Summer Camp (School Age)	Schoolhouse	Weekly	Monday to Friday	9:00-15:00
Infant/Toddler	Pavilion	Term (Fall, Winter, Spring, Summer)	Wed	9:00-9:50/ 10:00-10:50
Half-Day Preschool (Occasional)	Pavilion	Annual	Tue, Thu	9:00-12:00

NEW

5

Half-Day Program at Pavilion



Part-time Half-Day Japanese Preschool Program

- Esquimalt Gorge Pavilion
- 9:00AM – 12:00PM
- 2 & 3 days /week (**Tuesday, Wednesday & Thursday**)
- ~~\$290.00~~ \$250.00 & \$350.00 /month

The program will be the same as the Japanese immersion preschool program at the schoolhouse, operated by JLC teachers.

Currently still in the process of getting licensed for Sep 2023.

There are still possibilities for

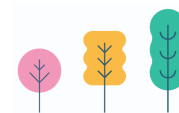
- 3 days/week (The, Wed, Thu) option
- Only 2 hours (9:00am-11:00am) for the program, depending on the type of license we have

We are hoping to be able to announce the final plan in Spring 2023.

This slide was updated on February 3, 2023

6

Preschool Daily Schedule Model



Craigflower Schoolhouse

Time	Activities
8:30-9:00	Arrival Free Play Time
9:00 – 9:30	Morning Greeting & Songs Body Movement Activity
9:30 – 10:30	Theme Learning Activities (Story time, Craft, etc.)
10:30 – 11:00	Snack Time
11:00 – 11:50	Outdoor activity (Backyard play, neighborhood walk, etc.)
12:00 – 13:00	Lunch Time Quiet Time
13:00 – 13:20	Free Play Time
13:20 – 14:00	Theme Learning Activities (Story time, Craft, etc.)
14:00 – 14:50	Outdoor activity (Backyard play, neighborhood walk, etc.)
14:50 – 15:00	Goodbye Greeting & Songs Dismissal

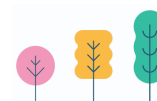
Esquimalt Gorge Pavilion

Time	Activities & Leading Teacher
9:00-9:20	Arrival Free Play Time
9:20 – 9:40	Morning Greeting & Songs
9:40 – 10:30	Theme Learning Activities (Story time, Art & Craft, etc.)
10:30 – 11:00	Snack Time
11:00 – 11:50	Body Movement Activities / Outing (Dancing, neighborhood walk, etc.)
11:50 – 12:00	Goodbye Greeting & Songs Dismissal

Currently still in the process of getting licensed for Sep 2023.

7

Schedule & Pick-up Options



Program Schedule

- Full-Day: 8:30AM – 3:00PM
- Half-Day
 - AM: 9:00PM-12:00PM
 - PM: 12:00PM-3:00PM

NEW

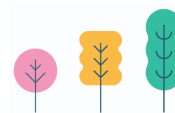
NEW

Pick-up Options for Full-Day program

- Early Pick-Up (2:30PM-2:50PM)
An advanced arrangement is required.
- Late Pick-Up (3:10PM-3:30PM)
An advanced arrangement & Extra fee is required.

8

Program Options & Fee



Preschoolers at Schoolhouse		Fee	CCFRI ^{*1}	Parent Fee ^{*2}	Late Pick-up (15:30)
Japanese Immersion (Sep-Jun) Full Day 8:30-15:00	5 days / week	\$1,000.00	\$545.00	\$455.00	+ \$60.00
	(Half-day*)	\$610.00	\$205.00	\$405.00	
	4 days / week	\$830.00	\$436.00	\$394.00	+ \$48.00
	(Half-day*)	\$510.00	\$124.00	\$386.00	
	3 days / week	\$650.00	\$270.00	\$380.00	+ \$36.00
	(Half-day*)	\$410.00	\$63.00	\$347.00	
	2 days / week	\$450.00	\$100.00	\$350.00	+ \$24.00
	(Half-day*)	\$290.00	\$20.00	\$270.00	

* 1 The Full Day preschool program is expected to be fully eligible for **Child Care Fee Reduction Initiative** in Sep 2023.

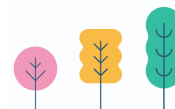
* 2 The parent fee is subject to change along with the CCFRI policy.

* Half-Day options (9:00-12:00/12:00-15:00) may be available when the class is not reached at the capacity of 15.

Preschoolers at Pavilion		Fee	CCFRI	Parent Fee	Note
Japanese Immersion (Sep-Jun) Half Day 9:00-12:00	3 days / week	\$350.00	N/A	\$350.00	Currently in the process of getting licensed. These options are still pending.
	2 days / week	\$250.00	N/A	\$250.00	

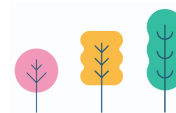
This slide was updated on February 3, 2023

Requirements



PROGRAM		REQUIREMENTS
Schoolhouse Full Day 8:30-15:00	4 - 5 days / week	<ul style="list-style-type: none"> Students are expected to follow “Japanese Only Policy”. A family member is willing to learn Japanese along with student.
	2 - 3 days / week	
Schoolhouse Half-Day 9:00-12:00 12:00-15:00	2 - 5 days / week	<ul style="list-style-type: none"> Students are expected to follow “Japanese Only Policy”. Students are expected to have Japanese language experience at entry. At least one of family members can support the student for Japanese communication at home. The minimum attendance days per week would vary from child to child depending on their Japanese comprehension.

Priority Order for Registration

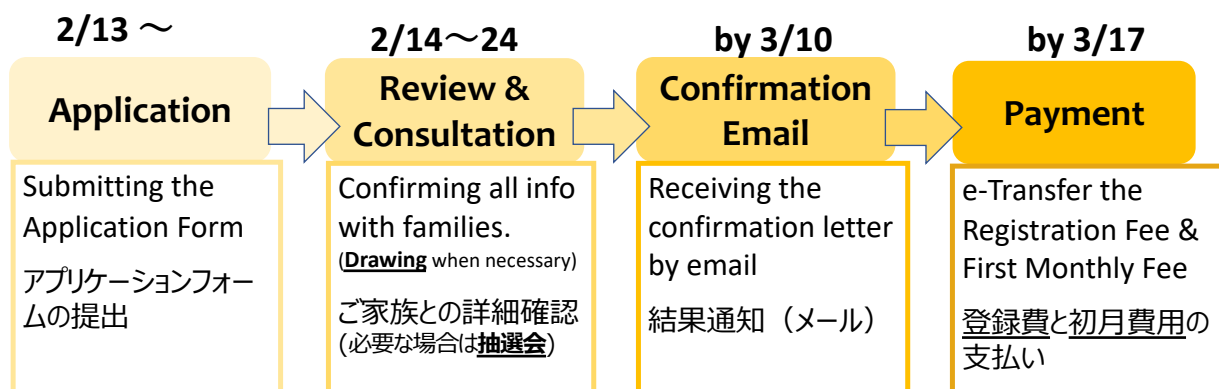
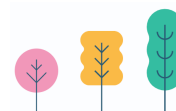


1. Full-Day Student (at Schoolhouse)
 1. Current Preschool Students
 2. Siblings of Current Preschool Students
 3. New students
 2. Half-Day Student (Schoolhouse* & Pavilion)
 1. Current Preschool Students
 2. Siblings of Current Preschool Students
 3. New students
- * The Half-Day program at Schoolhouse may be available when the class is not reached at the capacity of 15.

The policy subject to change depending on the class situation of the year.

11

Important Dates for Registration



[Pre-Registration for Current Students](#)
February 8 to 10, 2023

As soon as your payment is confirmed, your seat will be reserved.
If your payment cannot be confirmed by March 17, the seat will be given to next person on the waiting list.

12

Q & A

Let us know if you have any questions.

contact@jlc victoria.com



JLC VICTORIA